

# Clarion-Little Toby Trail

## About the Trail

The Clarion-Little Toby Trail, located in the heart of the Pennsylvania Wilds, is an 18-mile rail-trail that meanders along the Clarion National Wild and Scenic River and Little Toby Creek through scenic woodlands. The trail is surfaced with finely crushed limestone and is nearly flat - perfect for hiking, running, bicycling, and cross-country skiing.

The main trailheads are located in the historic towns of Ridgway and Brockway. Both communities offer lodging, dining, service stations and grocery stores. There are also businesses in Ridgway that offer bicycle rentals, repairs and sales.

While barely a trace of human activity exists, some historical remnants can be spied in this area that once buzzed with industrial activity during Pennsylvania's lumbering era over one hundred years ago.

Notable features along the trail include scenic river panoramas, a swinging bridge over Little Toby, and numerous small waterfalls. Benches are placed to take advantage of scenic views. The big woods of Pennsylvania abound with wildlife. Watch for river otters, beavers, bald eagles and common mergansers along the Clarion River and Little Toby Creek. When you stop for a break, listen to the woodland songbirds and watch for wild turkey, foxes, porcupines, white-tailed deer, and if you are lucky, a black bear.

## Stay for the Weekend

Visit the Ridgway Welcome Center to learn more about the attractions and events in this area. More information is available at:

<https://www.ridgwaychamber.com/>

<https://visitpago.com/counties/jefferson-county/>

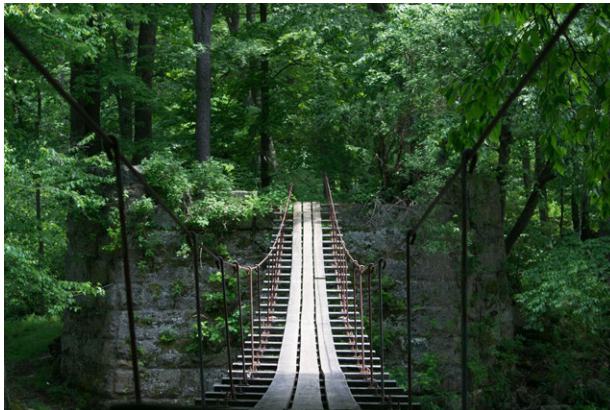
<https://visitpago.com/counties/elk-county/>

## History of the Trail Corridor

The history of this area reaches back in time to the early Native American inhabitants, who camped along the Clarion River using the area's numerous rock outcrops for shelter. Lured by the dense forests that covered this region, the first settlers arrived in 1798 and the town of Ridgway was founded in 1824. The Clarion River and Little Toby Creek served as important transportation corridors through this vast roadless wilderness. The early industry of the area was built around log drives and rafting of timber to markets in Pittsburgh, and even as far as New Orleans. The trail follows the route of the former Ridgway and Clearfield branch of the Pennsylvania Railroad, which was built in 1883. Over the years, many of the towns along the route faded away and the last train ran in 1968. The tracks were removed in 1972 and twenty years later, the idea of converting the corridor into a recreational trail was born. Visit our website to learn more.

## For Your Safety and Enjoyment

- Cell phone service is limited outside of Ridgway and Brockway.
- The trail shares a 1.8 mile section of the corridor with an active rail line. While it has minimal train traffic, stay on the trail.
- Wear fluorescent orange during hunting seasons.
- Tricounty Rails to Trails does not own or maintain the swinging bridge, cross at your own risk.



- Timber rattlesnakes are occasionally seen on the trail. Appreciate them from a distance and let them move off the trail.
- There are no restrooms along the trail. Public restrooms are available at the Sheetz in Ridgway and Brockway, and at the Ridgway Welcome Center.
- If you venture off the trail, check yourself for ticks when you get home.

## About Us

The Clarion-Little Toby Trail was developed and is maintained by the volunteers at the non-profit Tricounty Rails to Trails Association, which was founded in 1992. The trail was completed in 2003. Our volunteers also maintain the Five Bridges Trail and the Wolf Run Trail. We are working to connect to other trails in the region to complete the PA Wilds Loop of the Industrial Heartland Trails, which will inter-connect hundreds of miles of trail across several states.

It takes a small army of dedicated volunteers and a steady flow of donations to maintain this wonderful resource and build new trails. You can help by volunteering, becoming a member, joining our Adopt-A-Trail program, or making a donation at our secure trailside containers or online. Scan the QR code to visit our website.



## Emergency Information

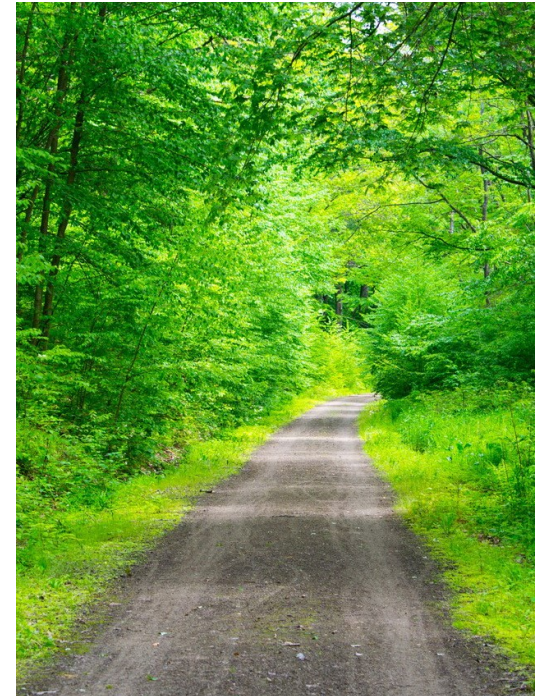
### Call 911 for Emergencies

**QCare:** Ridgway  
104 Metoxet Street, (814) 772-8122

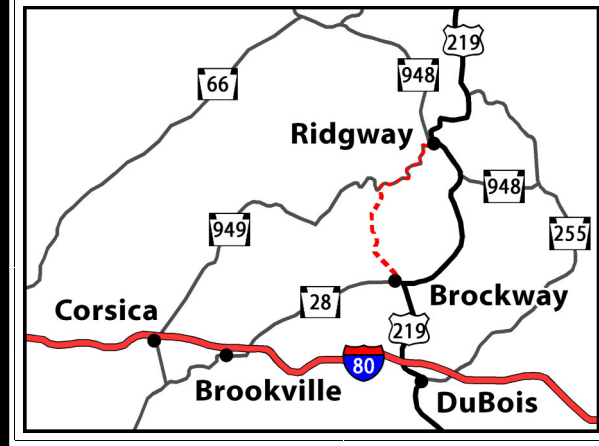
**Penn Highlands Hospital:** DuBois  
100 Hospital Avenue, (814) 371-2200

**Penn Highlands Elk Hospital:** St Marys  
763 Johnsonburg Road (PA 255), (814) 788-8000

# Clarion-Little Toby Trail

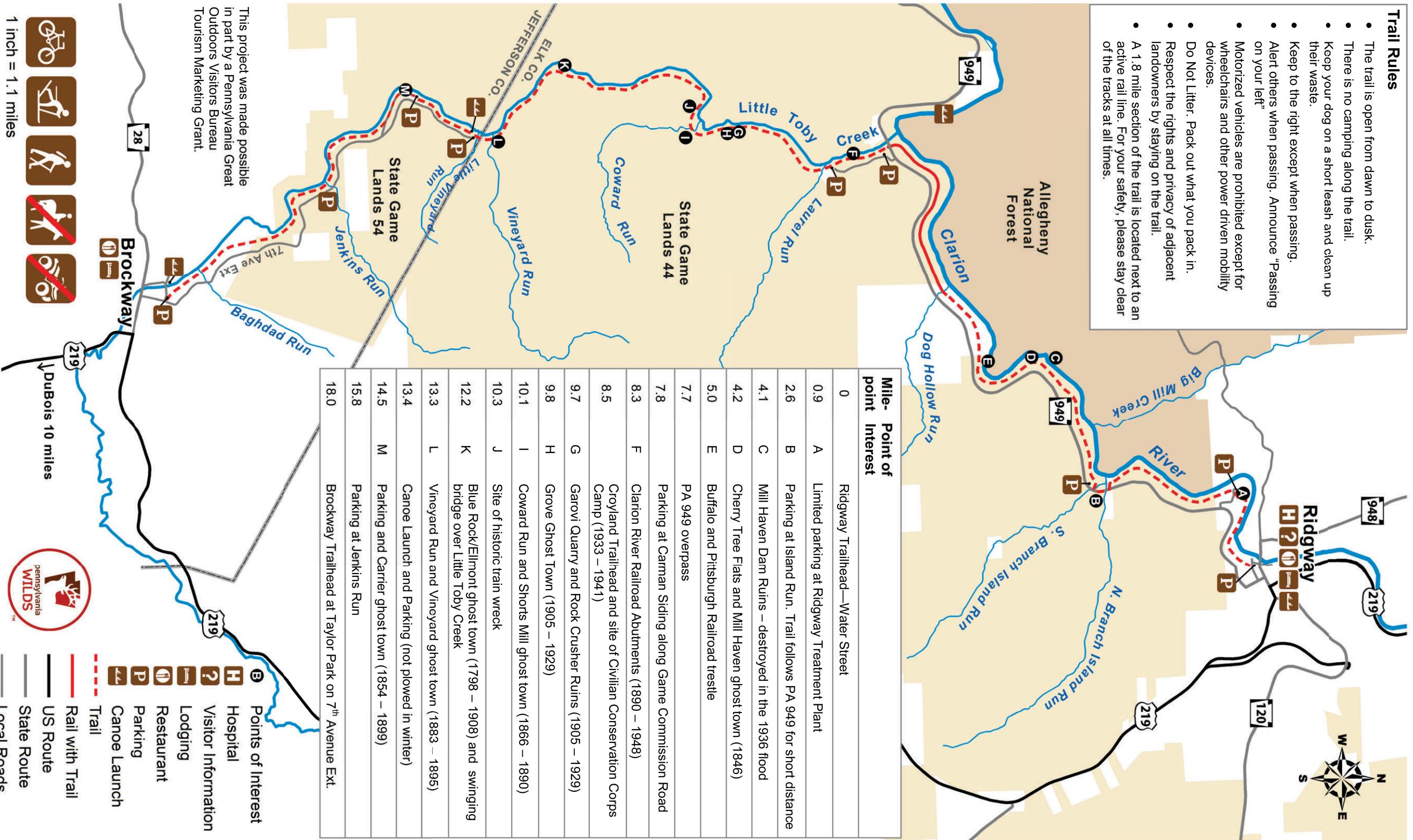


[TriCountyRailsToTrails.org](https://www.tricountyrailstotrails.org)



### Trail Rules

- The trail is open from dawn to dusk.
- There is no camping along the trail.
- Keep your dog on a short leash and clean up their waste.
- Keep to the right except when passing.
- Alert others when passing. Announce "Passing on your left"
- Motorized vehicles are prohibited except for wheelchairs and other power driven mobility devices.
- Do Not Litter. Pack out what you pack in.
- Respect the rights and privacy of adjacent landowners by staying on the trail.
- A 1.8 mile section of the trail is located next to an active rail line. For your safety, please stay clear of the tracks at all times.



Mile- point	Point of Interest
0	Ridgeway Trailhead—Water Street
0.9	A Limited parking at Ridgeway Treatment Plant
2.6	B Parking at Island Run. Trail follows PA 949 for short distance
4.1	C Mill Haven Dam Ruins – destroyed in the 1936 flood
4.2	D Cherry Tree Flats and Mill Haven ghost town (1846)
5.0	E Buffalo and Pittsburgh Railroad trestle
7.7	PA 949 overpass
7.8	Parking at Carman Siding along Game Commission Road
8.3	F Clarion River Railroad Abutments (1890 – 1948)
8.5	Croyland Trailhead and site of Civilian Conservation Corps Camp (1933 – 1941)
9.7	G Garovi Quarry and Rock Crusher Ruins (1905 – 1929)
9.8	H Grove Ghost Town (1905 – 1929)
10.1	I Coward Run and Shorts Mill ghost town (1866 – 1890)
10.3	J Site of historic train wreck
12.2	K Blue Rock/Ellmont ghost town (1798 – 1908) and swinging bridge over Little Toby Creek
13.3	L Vineyard Run and Vineyard ghost town (1883 – 1895)
13.4	Canoe Launch and Parking (not plowed in winter)
14.5	M Parking and Carrier ghost town (1854 – 1899)
15.8	Parking at Jenkins Run
18.0	Brockway Trailhead at Taylor Park on 7 <sup>th</sup> Avenue Ext.

This project was made possible in part by a Pennsylvania Great Outdoors Visitors Bureau Tourism Marketing Grant.

- Bicycles
- Wheelchairs
- Hiking
- No Hiking
- No Bicycles

1 inch = 1.1 miles



- Points of Interest
- Hospital
- Visitor Information
- Lodging
- Restaurant
- Parking
- Canoe Launch
- Trail
- Rail with Trail
- US Route
- State Route
- Local Roads

