



Redbank Valley Trail: 51 mile non-motorized trail from Brookville to East Brady, along Redbank Creek with bridges, stone arches, natural areas, and the newly opened Climax Tunnel. (Lat: 41.1592166 N, 79.0862138 W)

Redbank Valley Trail: 51 mile non-motorized trail from Brookville to East Brady, along Redbank Creek with bridges, stone arches, natural areas, and the newly opened Climax Tunnel. (Lat: 41.1592166 N, 79.0862138 W)

North Fork Creek: It is formed by the confluence of Muddy Run and Williams Run in Polk Township. It flows south through remote woodlands until it joins with Sandy Lick Creek in Brookville to form Redbank Creek. The stream is popular with anglers and well known for the Fish-For-Fun project below the dam at Walter Dick Memorial Park.

Redbank Creek: It flows 50 miles from its beginning at the confluence of Sandy Lick Creek and North Fork Creek in Brookville west through Summerville to New Bethlehem and ultimately joining the Allegheny River. (Lat: 41.1592166 N, 79.0862138 W)

Five Bridges Trail: 8.5 mile trail trail from Brockway to Allens Mills along and crossing Mill Creek that uses a portion of Mahoning Creek Valley for most of its path connecting Valler Mill; (Lat: 41.2527111 N, Long: 78.9622027 W)

Clarion-Little Toby Trail: 18-mile crushed-limestone rail-trail along Little Toby Creek and Clarion River from Brockway to ghost towns and a swinging bridge. (Lat: 41.2527111 N, Long: 78.7971912 W)

Tobacco Trail: 11-mile hiking trail the narrow valleys and hardwood forests of the Pennsylvania Great Outdoors region for 110 miles through forested mountain slopes teeming with wildlifer, with intermittent riffles and rock outcrops above its surface, provides a picturesque backdrop for outdoor recreation. Honored as 2019 Pennsylvania River of the Year and it was also featured on a U.S. Postage stamp. (Lat: 41.3291175 N, Long: 79.1029795 W)

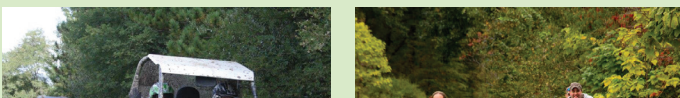
Baker Trail: 140-mile hiking and backpacking trail, following Creek that parallels Route 219 in former Pennsylvania forest paths, old jeep trails, paved roads and dirt roads through woods, farmlands, and along rivers and creeks that traverse six counties. (Lat: 41.1152166 N, Long: 79.1849138 W)

HIKING TRAILS

JEFFERSON COUNTY

Outdoor Recreation Map

TRAILS & ATTRACTIONS



Sandy Lick Creek: It enters Jefferson County near the town of Falls Creek and flows west through Reynoldsville to Brookville where it joins North Fork Creek to form Redbank Creek. 80% of the watershed is forested. (Lat: 41.0959661 N, Long: 78.9391509 W)

Coopspring Power Museum: More than 500 historically significant internal combustion engines depicting 150 years of development of Industrial America draw visitors from around the globe. (Lat: 41.0424605 N, Long: 79.084949 W)

Clear Creek: 27-acre reservoir with a pier and easy-access shore fishing. Electric motors and unpowered boats only. (Lat: 40.949604 N, Long: 78.9052692 W)

Clear Creek State Park: The park encompasses more than 1,900 acres in the scenic Clear Creek Valley. It offers hiking, camping, rustic cabins, and Clarion River access for fishing, swimming, and paddling. (Lat: 41.3228854 N, Long: 79.0767925 W)

Laurel Fields: Explore acres of Mountain Laurel near Clear Creek State Park. Enjoy a pavilion with benches and a driving loop to view Pennsylvania's State Flower, which feature beautiful pink and white blooms each June. (Lat: 41.2993175 N, Long: 78.7389873 W)

Brockway Golf Course: This picturesque golf course is accented by the 8th hole, a short par three over a pond and beautiful landscaping with a waterfall. (Lat: 41.2571684 N, Long: 78.8302006 W)

Beechwoods Golf Course: 18-hole course that features 5,697 yards of golf from the longest tees for a par of 70. (Lat: 41.1693702 N, Long: 78.8302006 W)

Beartown Rocks: The "best-kept secret" in Clear Creek State Forest. Massive house-sized boulders, created by glaciers, with breathtaking scenic views and hiking trails. (Lat: 41.3027775 N, Long: 79.0603020 W)

Barclay Square: Historic town square was named for the founding father, Reverend David Barclay, who donated the land for public use in 1822. The stone Memorial Bandstand in the center of the park was dedicated in 1933 as a memorial to veterans. (Lat: 40.94344499 N, Long: 78.9689609 W)

PLACES OF INTEREST

Gobbler's Knob: On February 2nd, thousands of people from snow mobiles and equestrian riders.

Piney ATV Trail: 24 mile privately owned ATV trail from Brookville to Piney Reservoir on the former Piney Creek Rail Bed that is open to hikers, bikers, ATV, UTV, motorcycle,

ATV TRAILS

Woff Run Trail: 4.2 mile crushed-limestone scenic hiking & biking trail with four bridges between Brookway and Falls Creek that parallels Route 219 in former Pennsylvania forest paths, old jeep trails, paved roads and dirt roads through woods, farmlands, and along rivers and creeks that

Scottish Heights Golf Course & Lodge
Play and stay packages include unlimited golf, superior dining, comfortable accommodations, and breathtaking setting. Relax at our outside tiki bar with live weekend entertainment. (814) 265-4653 • 287 Scottish Heights Drive, Brockport, PA 15823 • Facebook.com/ScottishHeightsGolfClub

Stanroph Cabin
A quality and authentic log cabin built in 1934. Situated on nine acres near Cook Forest, featuring a hot tub, fire pit, wood stove, and more. (814) 441-8501 • 96 Baxter Run Road, Clarington, PA 15828 • Cabin.Stanroph.com

Super 8 Motel-Brookville
Five minutes from Brookville Historic District and 16.3 miles from Cook Forest State Park. Access to I-80. Microwaves, mini-fridges, free wifi. Complimentary continental breakfast and truck/bus parking. (814) 849-8840 • 251 Allegheny Boulevard, Brookville, PA 15825 • Super8.com

Three Sisters Cabins
Cozy Cabin in the woods, recent updates. Sleeps 8. Fireplace, full kitchen, DVD, A/C, gas grill, outdoor ring. Pets welcome. (724) 822-3942 • 9756 Route 36, Sigel, PA 15860 • ThreeSistersCabins.com

Thistle Lane Farm
3 Bedroom 2 bathroom Airbnb farm stay in Punxsutawney. Entire house, farm stay will be on a working farm with cows and goats. Fishing and hunting available. (814) 952-9631 • 557 Lipp Road, Punxsutawney, PA 15767 • ThistleLaneFarm.com

White’s Haven Campground and Cabin
Permanent and overnight RV sites, tent sites, and primitive cabin. Clean bathrooms and showers. Propane, pavilion, laundromat, groceries, and a fishing pond. (814) 752-2205 • 3058 Cathers Run Road, Clarington, PA 15828 • WhitesHavenCampground.com

PENNSYLVANIA GREAT OUTDOORS VISITORS BUREAU

VisitPAGO.com/ Jefferson

(814) 849-5197

Pinecast Country Club: Beautiful 18-hole USGA/WPGA public golf course nestled within the rolling hills near Brookville with a Pro-Shop, pub, and grill. (Lat: 41.1730047 N, Long: 79.1514367 W)

Kyle Lake: 165 acres reservoir with a handicapped accessible fishing pier. Electric motors and unpowered boats only. (Lat: 41.159281052 N, Long: 78.841114389 W)

Lewis Painter Memorial Trout Nursery: Come feed these kids' fishing derby each May at Clear Creek State Park and to the banks of North Fork Creek with a picnic area, playground, swimming, swinging brdge, and fly-fishing-only section for trout. (Lat: 41.1686718 N, Long: 79.0745456 W)

Walter Dick Memorial Park: A great spot for family fun on the banks of North Fork Creek with a picnic area, playground, swimming, swinging brdge, and fly-fishing-only section for trout. (Lat: 41.1686718 N, Long: 79.0745456 W)

Laurel Fields: Explore acres of Mountain Laurel near Clear Creek State Park. Enjoy a pavilion with benches and a driving loop to view Pennsylvania's State Flower, which feature beautiful pink and white blooms each June. (Lat: 41.2993175 N, Long: 79.0480760 W)

Jefferson County Fairgrounds: Home each July to the Jefferson County Fair. Large covered grandstands and parking lots make it popular many other events throughout the year as well. (Lat: 41.1709333 N, Long: 79.0398020 W)

Jefferson County Airport (DUJ): The official airport for Pennsylvania's Great Outdoors region with daily flights to and from Pittsburgh and Baltimore on Southern Airways Express. (Lat: 41.1831066 N, Long: 78.8925925 W)

Hazen Flea Market: Enjoy shopping hundreds of vendors the weekend of the 1st Sunday, May through October, Saturday and Sunday set-up/sales. (Lat: 41.2131408 N, Long: 78.9581872 W)

Scipture Rocks Heritage Park: Hiking trail through 67 engraved boulders carved by Douglas M. Stahman in the early 1900s, including Chapel Rock, where he lived and penned his journals. Pet friendly with a picnic area. (Lat: 41.0547807 N, Long: 78.8082952 W)

Scottish Heights Golf Club: Play and stay packages include unlimited golf, superior dining, comfortable accommodations, and breathtaking setting. Relax at our outside tiki bar with live weekend entertainment. (Lat: 41.2176650 N, Long: 78.7462216 W)

Reynlow Park: 600 acres, 4 pavilions, stage, gazebo, primitive camping sites, fishing pond, volleyball, and playground areas. rhododendron thickets, hemlock wetland, rock outcrops, Horseshoe pits, hiking trails, Sportsman's Dam, bathrooms, electric, and dumpsters. (Lat: 41.0691634 N, Long: 78.8986632 W)

Lake View Cottage
Beautiful lake view property nestled in the pines 79 miles North of Pittsburgh. Fully furnished with all amenities. Let your cares drift away in the serenity. (814) 229-4844 • 384 Lake Drive, Ringgold, PA 15770

MacBeth's Cabins
28 clean modern log cabins on the scenic Clarion River adjacent to beautiful Cook Forest. Propane, gasoline, groceries, and gifts on premises. V/MC/AE/DI. (800) 331-6319 • 15361 Route 36, Cooksburg, PA 16217 • MacbethsCabins.com

Maple Shade Mansion
Our beautiful guest rooms coupled with exceptional amenities and unparalleled hospitality offer the perfect choice for a special getaway, romantic honeymoon, or business traveler seeking excellent accommodations. (814) 265-1023 • 1017 Main Street, Brockway, PA 15824 • MapleShadeMansion.com

Mary's Estate Lodging and Event Center
Immaculate estate on 10-plus acres, sleeps 15, two ponds. Minutes from Punxsy Phil and Gobblers Knob. Completely remodeled, full kitchen. Check our amazing reviews! (814) 590-1131 • 13195 Route 536, Punxsutawney, PA 15767 • Airbnb.com/h/punxsutawney-homes

Plantation Bed & Breakfast
Seven bedrooms, each with own private bathroom, Dish TV, wifi, 24-hour Keurig coffee, and a magical garden. Also a self-contained four-bedroom cottage available. (814) 939-7371 • 20652 Route 119, Punxsutawney, PA 15767 • PlantationGetaway.com

River Life Cabin
Cabin with large screened-in-deck overlooking the Clarion River. Huge waterfront. Canoe, kayak, and fish from the front yard. Fire pit. Sleeps 10-12 people. (412) 951-0837 • 19 Hancock Drive, Clarington, PA 15828 • RiverLifeCookForest.com

Rodeway Inn
68 guest rooms located on I-80 Exit 78. Included: free continental breakfast, wifi, mini-fridge, microwaves, coffee makers, guest laundry. Truck/Bus parking. (814) 849-8381 • 235 Allegheny Boulevard, Brookville, PA 15825 • ChoiceHotels.com/Pennsylvania/Brookville/Rodeway-inn-hotels/pa146

Woods Paradise Campground and Cabins
A/C, Dish, VCR/DVD, sun porches. Sleeps 10. Tents, campers, new seasonal sites, nice restrooms and showers. PayPal accepted. (330) 385-2404 • 610 Shafter Road, Sigel, PA 15860 • AtTheWoodsCabins.com

At The Woods Cabin and Campground
Two-bedroom cabin, fully equipped kitchen, fireplace, TV/PA 15860 • Facebook.com/Farmers-Inn-163797609932

LODGING

Cabins at Farmers Inn
Cabin rental across from Farmers Inn on Route 949, two miles north of Sigel. Rustic cabins. Sleeps one to four people. Bring sheets and towels. (814) 752-2942 • 759 Shafter Road, Sigel, PA 15860 • Facebook.com/Farmers-Inn-163797609932

Black Bear Cabins
Black Bear Cabins offers families, friends, and groups an escape in Cook Forest. All cabins offer log-burning fireplaces and modern amenities including TV and wifi. (814) 744-8017 • 55 BlackbearLane, Cooksburg, PA 16217 • BlackBearCabins.HideAwayCottages.net

Blit's Hide-A-Way Cottages
Surrounded by state forest offering unmatched privacy. Clean cottages featuring hot tubs, wifi, smart TV, fireplaces, A/C, and more. Near Cook Forest and the Clarion River. (814) 328-22719 • 2647 Firetower Road, Brookville, PA 15825 • HideAwayCottages.net

Belhown River Lodge
River Lodge located in Sigel PA. Canoeing, kayaking, hiking trails are a great activities. Local restaurants nearby. (814) 389-3438 • 15771 Route 949, Sigel, PA 15860 • BellTownRiverLodge.com

Barclay Bed & Breakfast
Stately Victorian home in the perfect downtown location. Features include six clean and spacious bedrooms, attractive decor, and a delicious home-cooked breakfast. (814) 618-5466 • 201 East Union Street, Punxsutawney, PA 15767 • BarclayBedAndBreakfast.com

Angel's Farm House
Peaceful farmhouse, sleeps seven, fully equipped kitchen, beautiful farmhouses, sleeps seven, fully equipped kitchen, bath with shower, wifi, and fire pit with split log benches. Close to attractions, Punxsutawney, Cook Forest, and Brookville. (814) 648-8325 • 1695 Chamberlin Road, Brookville, PA 15825 • Facebook.com/AngelsFarmHouse

Angel's Farm House
Peaceful farmhouse, sleeps seven, fully equipped kitchen, beautiful farmhouses, sleeps seven, fully equipped kitchen, bath with shower, wifi, and fire pit with split log benches. Close to attractions, Punxsutawney, Cook Forest, and Brookville. (814) 648-8325 • 1695 Chamberlin Road, Brookville, PA 15825 • Facebook.com/AngelsFarmHouse

Gateway Lodge Inn, Spa, and Restaurant
Among the ancient pines of Cook Forest, the Gateway Lodge is a calming retreat offering locally sourced fine foods, a full spa, and an atmosphere of relaxation and personal attention. (814) 744-8017 • 14870 Route 36, Cooksburg, PA 16217 • GatewayLodge.com

Grandma's Place
Historic property, near Rails to Trails and within walking distance of Historic Brookville with many antique shops and restaurants. Grocery store, gas station, and Post Office nearby. 413 Madison Avenue, Brookville, PA 15825 • AirBNB.com/rooms/27598944

Haugh's Nest, The
The cottage's quiet location is perfect for those visiting the PA Wilds with its fully functioning kitchen, bathroom, laundry room, fire pit, and more. (814) 715-3434 • 2178 Mendenhall Road, Brookville, PA 15825 • Airbnb.com/rooms/20137756

Hetrick Homestead Guesthouse
Large, quaint, and quiet farmhouse on 90 acres of rural PA wilderness. A charming throwback to grandma's house for campfires, hiking, exploring, and family gatherings. (440) 903-6400 • Summerville, PA 15864 • Airbnb.com/rooms/6930683

Hominy Ridge Lodge and Cabins
6 cabins in Cook Forest. Open year round. Smoke free, fireplaces, A/C, DirecTV, wifi, outdoor hot tub. ADA compliant in Cabin One. (800) 851-6377 • 13964 Route 36, Clarington, PA 15828 • HominyRidge.com

Into the Woods With the Hidersen
Enjoy rustic elegance at this secluded apartment just minutes from Interstate 80, popular trails, and attractions. Sleeps six. Pet friendly. Full kitchen. (814) 771-1909 • 1941 Milliron Road, Brookville, PA 15825 • Airbnb.com/rooms/26919903

Jackson Run Bed and Breakfast and The Cottage at Jackson Run
Enjoy a stay at Jackson Run Bed and Breakfast or The Cottage at Jackson Run. Located near Punxsutawney. All rooms come with private bath. (814) 938-2315 • 363 Jackson Run Road, Punxsutawney, PA 15767 • JacksonRun.com

CampersParadise.net
A/C, Dish, VCR/DVD, sun porches. Sleeps 10. Tents, campers, new seasonal sites, nice restrooms and showers. PayPal accepted. (330) 385-2404 • 610 Shafter Road, Sigel, PA 15860 • AtTheWoodsCabins.com

Campers Paradise Campground and Cabins
A/C, Dish, VCR/DVD, sun porches. Sleeps 10. Tents, campers, new seasonal sites, nice restrooms and showers. PayPal accepted. (330) 385-2404 • 610 Shafter Road, Sigel, PA 15860 • AtTheWoodsCabins.com

Cabins at Farmers Inn
Cabin rental across from Farmers Inn on Route 949, two miles north of Sigel. Rustic cabins. Sleeps one to four people. Bring sheets and towels. (814) 752-2942 • 759 Shafter Road, Sigel, PA 15860 • Facebook.com/Farmers-Inn-163797609932

Black Bear Cabins
Black Bear Cabins offers families, friends, and groups an escape in Cook Forest. All cabins offer log-burning fireplaces and modern amenities including TV and wifi. (814) 744-8017 • 55 BlackbearLane, Cooksburg, PA 16217 • BlackBearCabins.HideAwayCottages.net

Blit's Hide-A-Way Cottages
Surrounded by state forest offering unmatched privacy. Clean cottages featuring hot tubs, wifi, smart TV, fireplaces, A/C, and more. Near Cook Forest and the Clarion River. (814) 328-22719 • 2647 Firetower Road, Brookville, PA 15825 • HideAwayCottages.net

Belhown River Lodge
River Lodge located in Sigel PA. Canoeing, kayaking, hiking trails are a great activities. Local restaurants nearby. (814) 389-3438 • 15771 Route 949, Sigel, PA 15860 • BellTownRiverLodge.com

Barclay Bed & Breakfast
Stately Victorian home in the perfect downtown location. Features include six clean and spacious bedrooms, attractive decor, and a delicious home-cooked breakfast. (814) 618-5466 • 201 East Union Street, Punxsutawney, PA 15767 • BarclayBedAndBreakfast.com

Angel's Farm House
Peaceful farmhouse, sleeps seven, fully equipped kitchen, beautiful farmhouses, sleeps seven, fully equipped kitchen, bath with shower, wifi, and fire pit with split log benches. Close to attractions, Punxsutawney, Cook Forest, and Brookville. (814) 648-8325 • 1695 Chamberlin Road, Brookville, PA 15825 • Facebook.com/AngelsFarmHouse

Angel's Farm House
Peaceful farmhouse, sleeps seven, fully equipped kitchen, beautiful farmhouses, sleeps seven, fully equipped kitchen, bath with shower, wifi, and fire pit with split log benches. Close to attractions, Punxsutawney, Cook Forest, and Brookville. (814) 648-8325 • 1695 Chamberlin Road, Brookville, PA 15825 • Facebook.com/AngelsFarmHouse

Cobblestone Hotel and Suites
“Big-City Quality, Small-Town Values” - offering the amenities you require no matter the reason of your stay. Clean, comfortable, and service that exceeds your expectations. (814) 938-5144 • 188 Alliance Drive, Punxsutawney, PA 15767 • StayCobblestone.com/PA/Punxsutawney

Colors of the Forest RV Resort & Campground
Close to Cook Forest & Clear Creek State Parks. We offer seasonal, monthly, and nightly RV and campsites, tent sites, cabins and lodging rentals. 374 Shiloh Lane, Clarington, PA 15828 • ColorsoftheForestRVC.com

Cook Forest Motel and Cabin
Rooms/cabin sleep from four to nine guests. Families and bedding provided. Camping chairs, private bath, TV, mini-fridge, coffee pot, hair dryer. (814) 752-2327 • 12754 Route 36, Clarington, PA 15828 • Facebook.com/Cook-Forest-Motel-and-Cabin-156006427890512

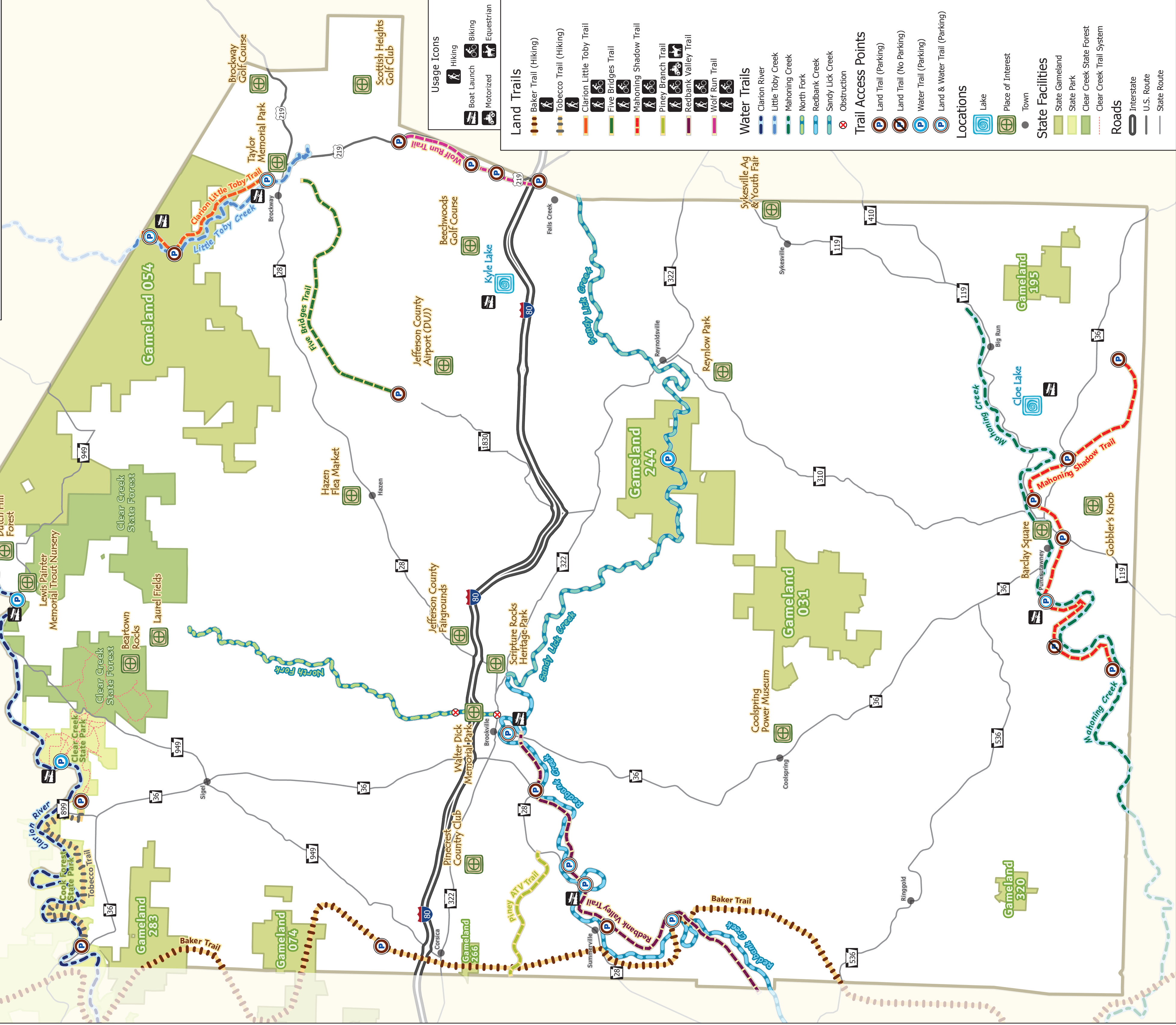
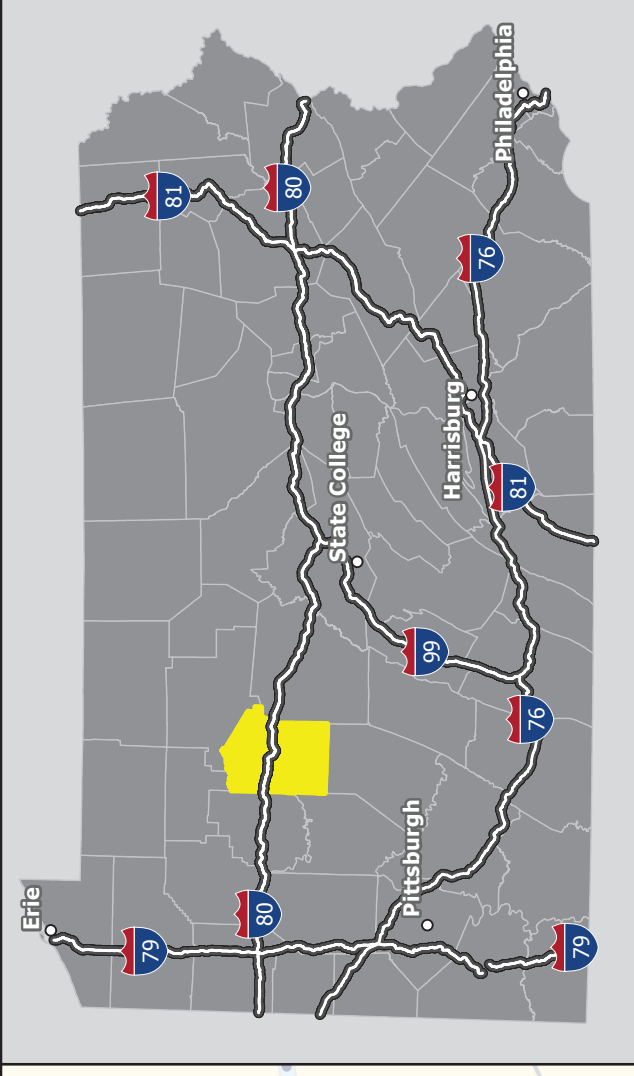
Evergreen Cabins & Mercantile
Newer log cabins and restored farmhouse for one to 12 people, also fireside Jacuzzi cabins for two. Private campfire areas. Dog friendly. Gift shop. (800) 561-6463 • 13278 Route 36, Cooksburg, PA 16217 • EvergreenCabins.com

Fair Winds in the Forest Cabins and Lodge
11 cabins between Cook Forest and Clear Creek State Parks with one on the Clarion River. Well-furnished including kitchenware, bed linens, fire ring and charcoal grill. (800) 680-0160 • 12810 Route 36, Clarington, PA 15828 • CookForestCabins.com

G. B. Carrier House Inn
A beautiful Victorian-style Inn located in downtown Historic Brookville that is family run and full of charm. Rent a room, or the whole Inn. (814) 648-8770 • 365 Main Street, Brookville, PA 15825 • Facebook.com/GBCCarrierHouse

Gateway Lodge Cabins
Eight cabins nestled in the heart of Cook Forest. Most cabins equipped with full kitchens and fireplace. Amenities include complimentary firewood, daily and weekly rates. (814) 744-8017 • 14870 Route 36, Cooksburg, PA 16217 GatewayLodge.com

Jefferson County Pennsylvania Trails and Places of Interest



Usage Icons

- Hiking
- Boat Launch
- Motorized
- Biking
- Equestrian

Land Trails

- Baker Trail (Hiking)
- Tobacco Trail (Hiking)
- Clarion Little Toby Trail
- Five Bridges Trail
- Mahoning Shadow Trail
- Piney Branch Trail
- Redbank Valley Trail
- Wolf Run Trail

Water Trails

- Clarion River
- Little Toby Creek
- Mahoning Creek
- North Fork
- Redbank Creek
- Sandy Lick Creek
- Obstruction

Trail Access Points

- Land Trail (Parking)
- Land Trail (No Parking)
- Water Trail (Parking)
- Land & Water Trail (Parking)

Locations

- Lake
- Place of Interest
- Town

State Facilities

- State Gameland
- State Park
- Clear Creek State Forest
- Clear Creek Trail System

Roads

- Interstate
- U.S. Route
- State Route