

# Thunder Mountain Equestrian Trail and State Game Lands 311 Designated Routes

Elk State Forest and Pennsylvania Game Commission



## State Forest Lands

Pennsylvania's vast state forest system comprises 2.2 million acres for you to use, enjoy and explore. The Department of Conservation and Natural Resources, Bureau of Forestry manages these forests to ensure their long-term health and to conserve native, wild plants.

The Elk State Forest comprises 217,000 acres in Cameron, Elk, Potter, McKean, Clinton, and Clearfield Counties.

## Care for the Land

State forests belong to all Pennsylvanians. Take time to enjoy them, but know the rules and regulations designed to conserve the forests. Please be careful with fire, keep our forests litter free and don't damage trees or other plants.

## Certified "Well Managed"

Pennsylvania state forests are certified to FSC® standards. The Forest Stewardship Council® is an independent organization supporting environmentally appropriate, socially beneficial, and economically viable management of the world's forests.



## Thunder Mountain Equestrian Trail (TMET)

Equestrian riders can access the 53-mile TMET from the Gas Well Camping Area or Dark Hollow Camping Area on Belle Draft Road, or the day use trailhead on East Hicks Road. The day use area lies approximately 3.75 miles from route 555. The trail consists of various loops, and has red 2" X 6" rectangular blazes and numbered intersections to guide users. Watch for hikers, mountain bikers, and other equestrian riders on the trail.

## Trail and Camping Information (State Forest)

- **All riders must remain on the marked trail system.** TMET trail markings consist of red 2" X 6" rectangular blazes with occasional hike, bike, horse symbols and numbered intersections.
- Group rides or commercial activities on state forest lands require agreements. Contact the District Office for more information
- Campsites may be available on state forest lands. Contact the District Office for more information
- Campers must be self-contained and on pad sites
- Carry-in, Carry-out all trash, including fire ring trash
- At state forest camping sites all horse waste, including manure, must be taken with you
- Horses must remain on designated pads while camping. Hitching rails are provided to tie your horse

## General Information for both agencies

- **Please stay on the trails or designated routes, open riding is not permitted**
- No Facilities for Horses at Elk Country Visitor Center
- Trailhead parking lots are for day use only
- Potable water is not available
- Approach wildlife cautiously, never get too close, keep your distance
- Injuring, destroying or causing damage to property, real, personal or mixed is prohibited
- Please cross-tie your horses to prevent damage to trees
- Feeding wildlife is prohibited
- Riding a non-motorized, conveyance or animal on trails open to foot traffic only is prohibited
- Removing or attempting to remove any man-made or natural object is prohibited, except wildlife and fish lawfully taken. Objects that may not be removed include animals, rocks, minerals, sand and historical or archaeological items
- Selling; distributing; delivering, guiding or renting any equipment, material or commodity; or otherwise transacting or engaging in any commercial activity is prohibited. Such activity is when a person directly or indirectly accepts consideration of value as compensation for the provision of goods or services, including transportation.
- Small open fires for cooking or warming are permitted except when the Fire Index Rating used by the Bureau of Forestry, DCNR, is high, very high or extreme. Fires must be contained and tended at all times



## STATE GAME LANDS 311 Designated Routes

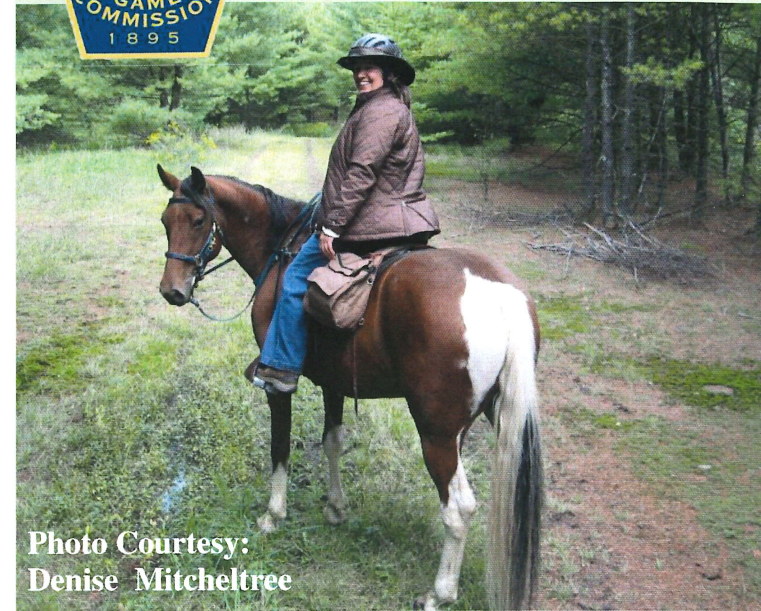


Photo Courtesy:  
Denise Mitcheltree

## State Game Lands

The Pennsylvania Game Commission owns and manages more than 1.5 million acres of state game lands throughout the commonwealth for wildlife and people. Several million acres are enrolled in the Game Commission Hunter Access program. State game lands are public hunting grounds and lawful hunting and trapping are permitted during open seasons.

For a complete list of permitted activities please reference the Pennsylvania Hunting & Trapping Digest.



www.facebook.com/PennsylvaniaGameCommission  
www.youtube.com/pagamecommission  
www.twitter.com/PAGameComm

## State Game Lands 311 Designated Routes

Outside of hunting seasons, equestrian riders can access the 12.3 miles of designated routes on SGL311 from day use parking areas on Dewey Road and Porcupine Hollow Roads. SGL 311 designated routes consist of various loops, and have green rectangle-shaped placards and numbered intersections to guide users

## Designated Route Information (SGL 311)

- It is unlawful to ride a non-motorized vehicle, conveyance or animal from the last Saturday in September until the third Saturday in January, and prior to one hour after close of lawful hunting hours for spring turkey season from the second Saturday in April through the last Saturday in May, inclusive, except on Sundays or while lawfully engaged in hunting, trapping or fishing
- During hunting season only specially marked trails will be open on game lands to access the TMET
- No alcohol, liquor, beer, malt or brewed beverage may be consumed, possessed or transported
- It is unlawful to engage in any activity or event involving more than 10 persons, which may conflict with the intended purposes or uses of property, or poses a potential environmental or safety problem on game lands. Please contact the game commission for more information
- It is unlawful to camp or use camp sites on state game lands
- Violating, failing or neglecting to follow instructions posted on signs authorized by the Executive Director is prohibited on state game lands



Designated route – trail riding  
is permissible

## For more information

Elk State Forest:  
258 Sizerville Road  
Emporium, PA 15834  
Fd13@pa.gov  
(814) 486-3353

Pennsylvania Game Commission:  
[pgc-ncregion@pa.gov](mailto:pgc-ncregion@pa.gov)  
1-570-398-4744

# Thunder Mountain Equestrian Trail and State Game Lands 311 Designated Routes Elk State Forest

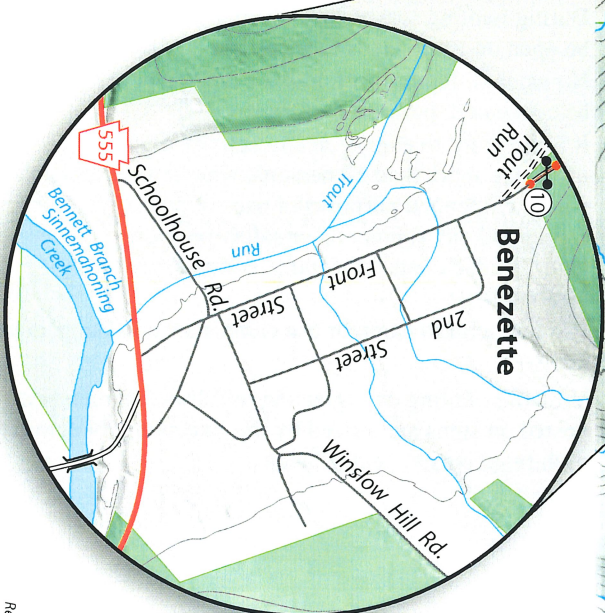
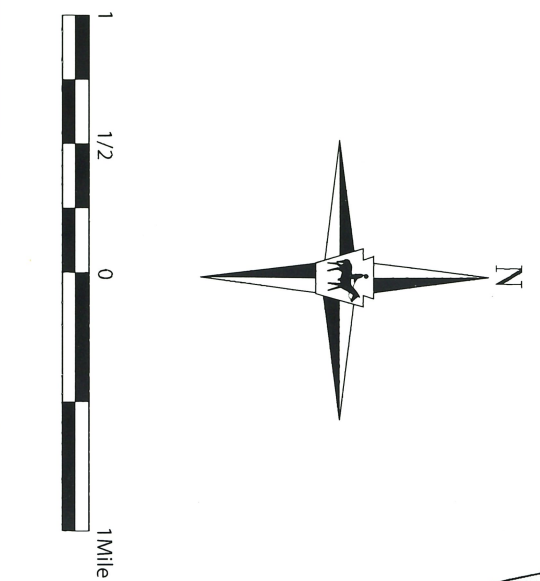
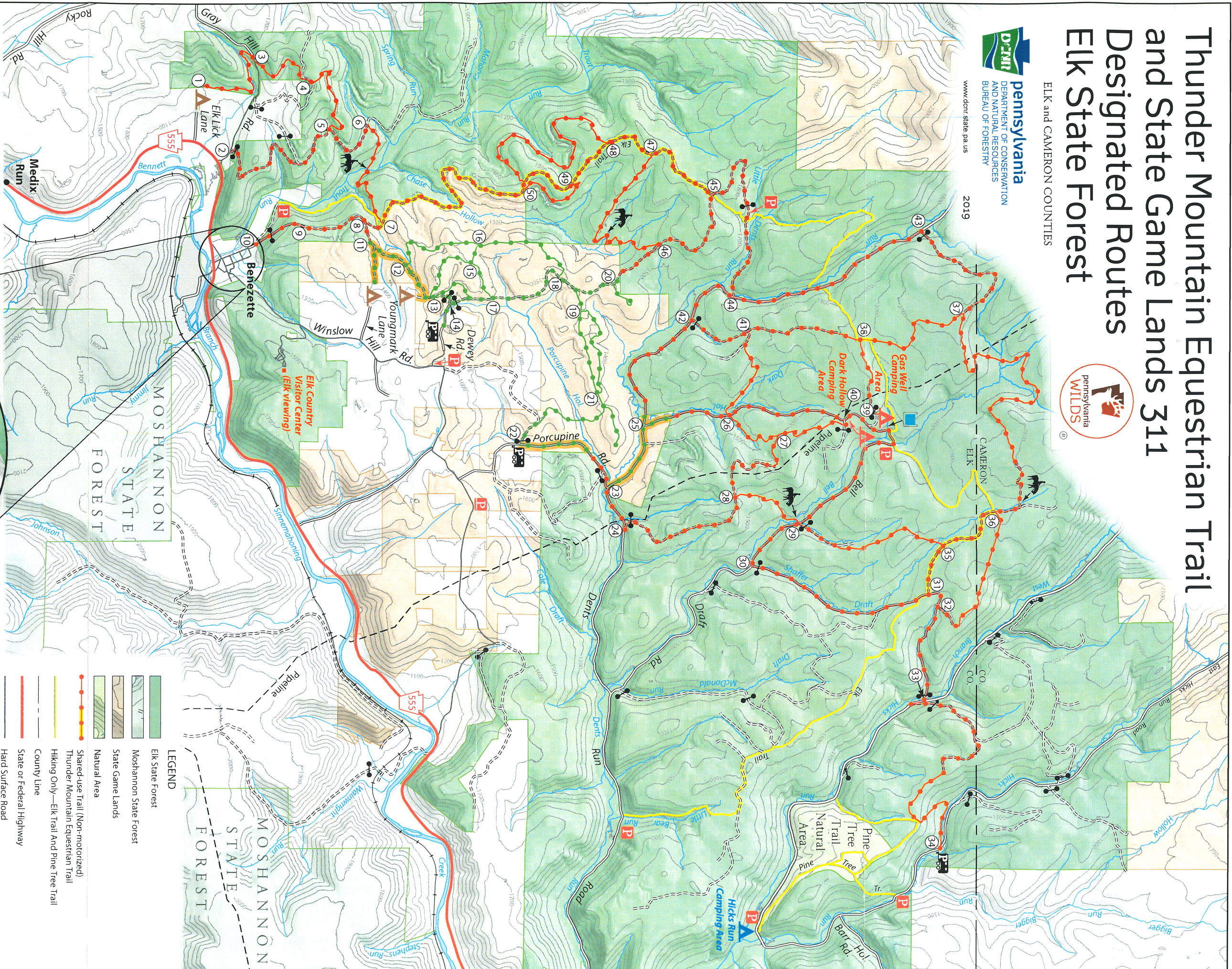


ELK and CAMERON COUNTIES



www.dcnr.state.pa.us

2019



- LEGEND**
- Elk State Forest
  - Moshannon State Forest
  - State Game Lands
  - Natural Area
  - Shared-use Trail (Non-motorized)
  - Thunder Mountain Equestrian Trail
  - Hiking Only—Elk Trail And Pine Tree Trail
  - County Line
  - State or Federal Highway
  - Hard Surface Road
  - Improved Dirt Road
  - Administrative Road
  - PGC Designated Route
  - PGC Designated Route—Open All Year
  - Gate
  - Parking Area
  - Parking Horse Trailers
  - Pipeline RW
  - Spring/non-potable Water
  - Horse-watering Site
  - Equestrian Camping
  - Camping
  - Private Camping
  - Intersection Number

Rev 11/20/18